

Aunt Grace Circle of Friends

Fabric by Judie Rothermel

Quilt Design & Patterns by Vicki Bellino of Bloom Creek



82" x 82"

Aunt Grace Circle of Friends

An Exclusive Block-of-the-Month Program

September 2010 through March 2011

In honor of the 100th birthday of Aunt Grace, Judie Rothermel has created a very special Aunt Grace collection, *Circle of Friends*, to be merchandised exclusively through a BOM program designed & developed by Vicki Bellino of Bloom Creek. As the originator of 1930's reproduction fabrics for the quilting industry, Judie presents her Aunt Grace devotees with a group of prints that is varied in color, scale and motif, as well as classic Aunt Grace solids.

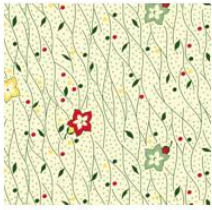
Together, Judie Rothermel and Vicki Bellino have designed a project that's not only beautiful, but also provides quilters with new techniques to advance their quilting skills.



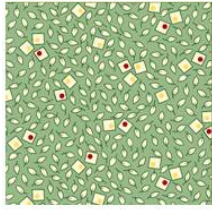
Aunt Grace Circle of Friends is the result of months of collaboration between Judie Rothermel and Vicki Bellino. Their friendship has developed because of quilting, as was the case with Aunt Grace's own circle of friends. The quilt design represents many Aunt Grace favorites, including pin-wheels, the Dresden plate, her local county fair and cake sales. Judie also captures Aunt Grace's love of small prints in this exclusive collection, and the quilt design incorporates the use of solids, which Aunt Grace used often in her quilts.

Vicki adds her own creative "spin" on the theme by designing a quilt with her unique interpretation of the traditional Aunt Grace style, as well as her personal passion for English paper piecing and appliqué. The appliqué is minimal, making it suitable for even a beginning quilter and instructions for two techniques are included in the instructions. Throughout the 7-month program, Vicki shares her easy methods, allowing the quilter to experiment and learn as she or he creates. This makes *Circle of Friends* a perfect way to introduce new quilters to Aunt Grace while also appealing to the long-time Aunt Grace collector!

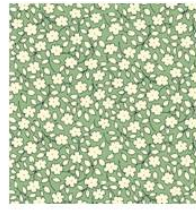
Month 1



2839-0314



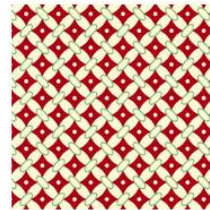
2846-0314



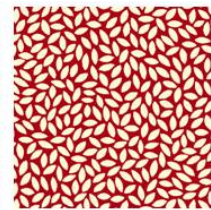
2858-0314



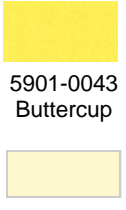
2859-0333



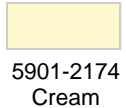
2847-0311



2851-0311



5901-0043
Buttercup

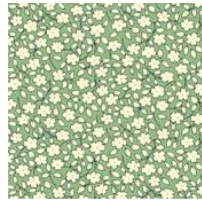


5901-2174
Cream

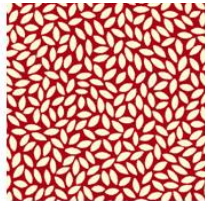
Month 2



2845-0350



2858-0314



2851-0311



2841-0311

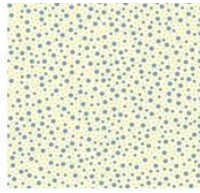


5901-0020
Red

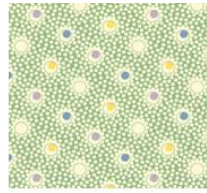
Month 3



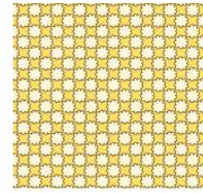
2836-0314



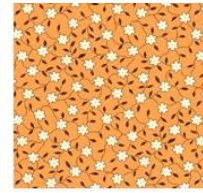
2854-0350



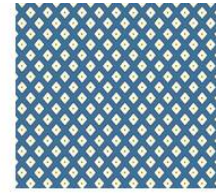
2852-0314



2857-0333



2844-0328



2856-0350

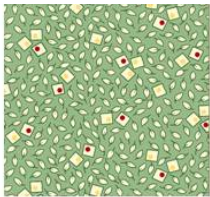


5901-2136
Apple Green

Month 4



2850-0314



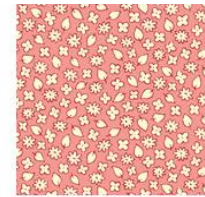
2846-0314



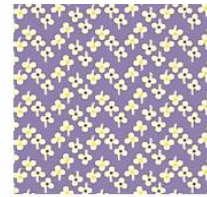
2836-0314



2849-0326



2853-0326

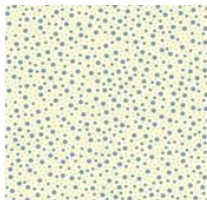


2842-0337

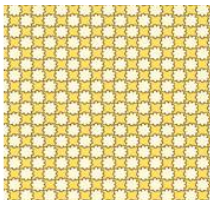


5901-0040
Taffy

Month 5



2854-0350



2857-0333



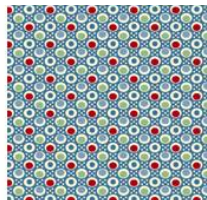
2840-0350



2837-0311



2838-0326



2848-0350



5901-0039
Dresden

Month 6



5901-2174
Cream



5901-0043
Buttercup

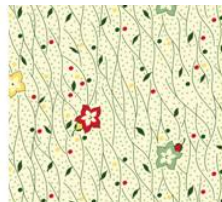


5901-2136
Apple Green

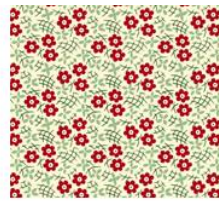
Finishing



2836-0314



2839-0314



2843-0311



2860-0350



5901-2174
Cream



5901-0043
Buttercup

NOTE: Fabric images are for reference only and are NOT shown to scale. Please refer to the swatch card.